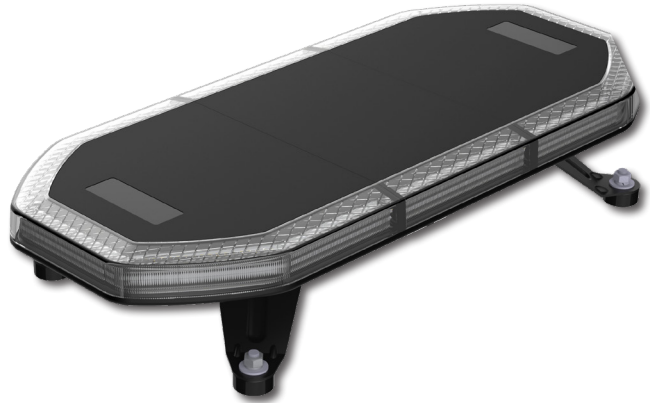


Selectable  
CAP168  
Flash  
Pattern

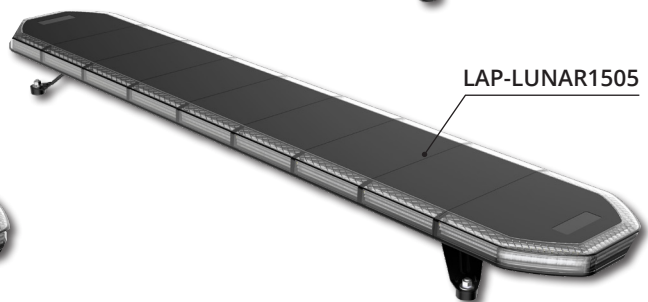
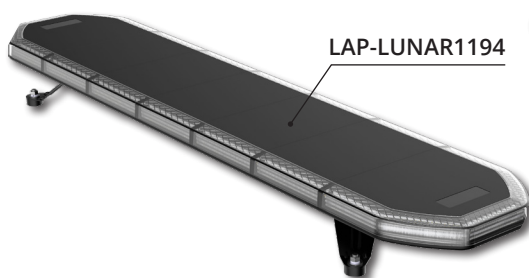
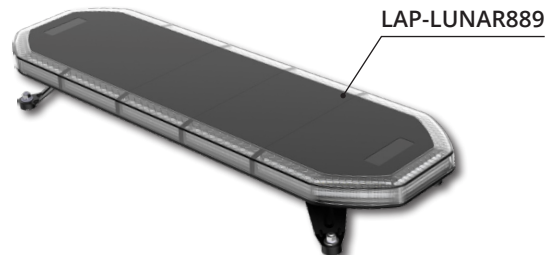
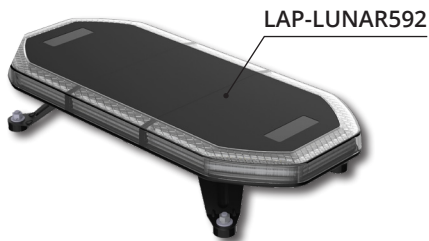
# LUNAR LIGHTBAR RANGE

## MAIN FEATURES

- Multi-voltage (10-30V)
- Clear polycarbonate lens
- Supplied with 3m cable
- Selectable CAP168 airport flash pattern
- Four R65 approved flash patterns including single & double flash
- Manufactured with 0.5W amber LEDs
- 280mm mini LUNAR also available (page 54)



## KEY POINTS

R65  
APPROVED  
CLASS IIR10  
APPROVED3 YEAR  
WARRANTYIP67  
INGRESS  
PROTECTION

Part Number	Length (A)	Number of LEDs	Width x Height	Mounting	Current @ 12V / 24V
LAP-LUNAR592	592mm	228	259 x 105mm	Four Point	9.5A / 4.8A
LAP-LUNAR889	889mm	324	259 x 105mm	Four Point	13.5A / 6.8A
LAP-LUNAR1194	1194mm	420	259 x 105mm	Four Point	17.5A / 8.8A
LAP-LUNAR1505	1505mm	516	259 x 105mm	Four Point	21.5A / 10.8A